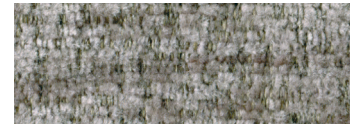
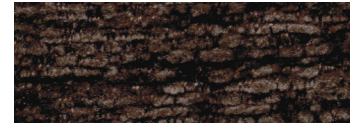




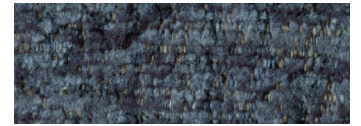
## Standard Fabrics:



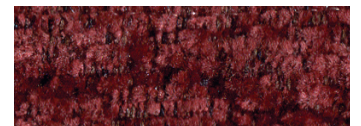
Anchor



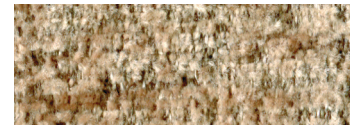
Bittersweet



Oxford



Port



Sandstorm

This fabric has a modern, updated look with rich color options. It features our exclusive SofTouch™ with Stain Defense coating.

\* An upcharge will apply for all crossover fabrics.

## MaxiComforter PR535



*Comfort Zone*™  
by GOLDEN

An old favorite meets new upgrades in the MaxiComforter power lift recliner! Our long-standing, Small-to-Tall size collection now features a contemporary design and plush fabric offerings! Refreshed features include a new arm style with additional padding for more comfort and value, extended arms to provide better ease of use while entering or exiting the chair while lifted, a new back style for maximum comfort, and a tasteful new seam design. Plus, Golden's most sought-after signature seat for the utmost in support and comfort. Available in luxurious chenille fabrics with a new upgraded stain defense. Comfort comes from custom tailoring. Find your size today!

## Standard Features:

- Patented MaxiComfort® Positioning
- Programmable AutoDrive™ Hand Control (excluding PR535-M26)
- Extra Pocket
- Upgraded Stain Defense



# MAXICOMFORT® Series PR535

Model Number	PR535-PSA	PR535-MED	PR535-LAR	PR535-TAL	PR535-M26*
Size	Petite/Small	Medium	Large	Tall	Medium/Wide
Weight Capacity	375 LBS	375 LBS	375 LBS	375 LBS	500 LBS
Positioning	MaxiComfort	MaxiComfort	MaxiComfort	MaxiComfort	MaxiComfort
Comfort Zone(s)	2	2	2	2	2
Twilight Technology	NO	NO	NO	NO	NO
Chaise Seat	YES	YES	YES	YES	YES
Pocketed Coil Seat	YES	YES	YES	YES	NO
Back Type	Seam	Seam	Seam	Seam	Seam
Removable Back Option	NO	NO	NO	NO	NO
Head Rest Cover	YES	YES	YES	YES	YES
Arm Rest Covers	YES	YES	YES	YES	YES
Overall Width	32"	32"	34"	34"	37"
Overall Height	40"	42"	43"	48"	45"
Width Between Arms	21"	21"	23"	23"	27"
Floor to Top of Seat	20"	20"	21"	23"	20"
Seat Depth	19"	19"	21"	21"	20"
Seat to Top of Back	26"	27"	29"	31"	30"
Seat to Top of Arm	6"	5"	6"	6"	5"
Distance Required from Wall Reclined	22"	23"	25"	26"	25"
Extension reclined from Back of Seat to End of Foot Rest	40"	41"	42"	45"	43"
Life Time Warranty, Chair Frame, Lift Frame, Recline Mechanism	YES	YES	YES	YES	YES
Warranty on Electrical Parts	3 YR	3 YR	3 YR	3 YR	3 YR
Pro Rated Years 4 Thru 7	YES	YES	YES	YES	YES
Warranty on Mechanical Labor	3 YR	3 YR	3 YR	3 YR	3 YR
Warranty on Electrical Labor	1 YR	1 YR	1 YR	1 YR	1 YR
Hand Control Routing	Inside Arm	Inside Arm	Inside Arm	Inside Arm	Inside Arm
Extra Pocket Option	Standard	Standard	Standard	Standard	Standard
Heat & Massage Option	YES	YES	YES	YES	YES
Articulating Headrest Option	NO	NO	NO	NO	NO
Adjustable Lumbar Option	NO	NO	NO	NO	NO
AutoFlex Option	NO	NO	NO	NO	NO
Foot Rest Extension Option	YES	YES	YES	YES	YES
Straight Lift Option	YES	YES	YES	YES	YES
USB Charging Port	NO	NO	NO </td <td>NO</td> <td>NO</td>	NO	NO
Battery Backup	YES	YES	YES	YES	YES
Place of Origin	USA	USA	USA	USA	USA



**Upgrade with  
Deluxe Therapeutic  
Heat & Massage!**



Shown in Anchor



\*The PR535-M26 does not feature our AutoDrive functionality.

SmartTek Diagnostic System STANDARD on all Golden models.

## Comfort Zone™ by GOLDEN

Comfort Zones 1 & 2 work together to create individualized wellness positioning and comfort. Each Comfort Zone can be adjusted independently by using the exclusive AutoDrive™ hand control (\*excluding PR535-M26).



LOWER BODY    UPPER BODY    HEADREST    LUMBAR    TWILIGHT TILT

**WE PATENTED COMFORT™**



Scan with your smartphone camera to learn more about Comfort Zone by Golden.



Phone: 800-624-6374  
Fax: 800-628-5165  
www.goldentech.com



Literature is current at time of printing. Golden Technologies reserves the right to make changes to the product or literature at any time.

Sizes may vary depending on fabric, filling material, upholstery and carpet thickness. All measurements taken on concrete floor using levels and metal rulers.



Complies with  
UL 73 and  
CSA C22.2 No. 68



www.facebook.com/goldentechnologies

SHT-PR535-111021